

Dado™ 28/4 Panel



PRODUCT OVERVIEW

Dado™ 28/4 is a powerful union between architecture and acoustical performance. Utilizing bold 4mm grooves in the a Class A fire rated, ULEF, FSC certified wood plank, **Dado™ 28/4** achieves up to an **NRC=0.80** while maintaining the ambiance of the space with reflections at the highest frequencies.

-sizing

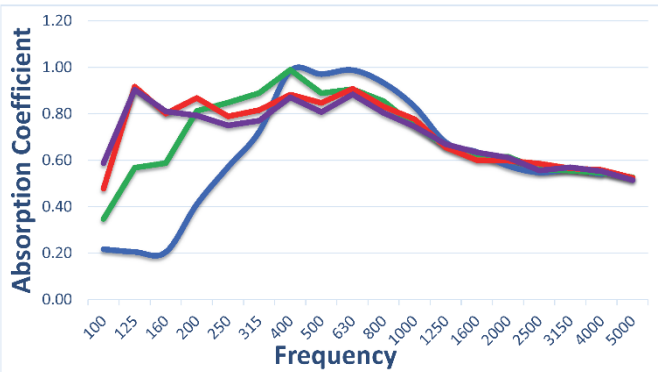
Standard Panel Dimensions: 8' length x 4' width
(alternate lengths and widths are available)
Thickness: 3/4"

LEED CREDITS

Mrc4, Mrc5, Mrc7
EQc4.2, EQc4.4,
Schools EQp3, Schools EQc9

FIRE RATING

Class A per ASTM E-84



- Blue = Dado 28/4 Panel + 1" 6pcf fiberglass board = NRC 0.75
- Green = Dado 28/4 Panel + 2" 6pcf fiberglass board = NRC 0.80
- Red = Dado 28/4 Panel + 3" 6pcf fiberglass board = NRC 0.75
- Purple = Dado 28/4 Panel + 4" 6pcf fiberglass board = NRC 0.75



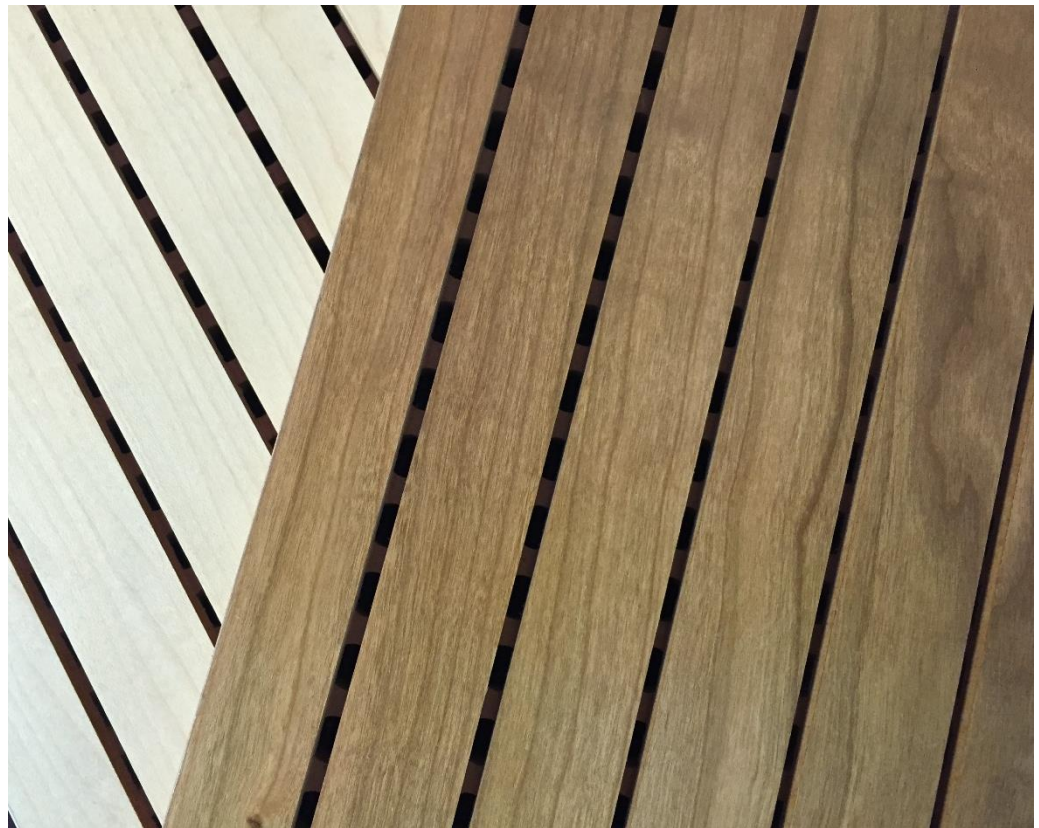
FINISH

The **Dado™ 28/4** panel system comes in a wide variety of finishes, including natural wood veneer, laminate and painted surfaces.

INSTALLATION

Mounting options include wall panel systems with a variety of cavity depths starting at 1-3/4" total system depth as well as options for T-Bar ceiling grid compatibility.

| Frequency | Dado 28/4 + 2" 6pcf Fiberglass |
|------------|--------------------------------|
| 100 | 0.35 |
| 125 | 0.57 |
| 160 | 0.59 |
| 200 | 0.81 |
| 250 | 0.85 |
| 315 | 0.89 |
| 400 | 0.99 |
| 500 | 0.89 |
| 630 | 0.91 |
| 800 | 0.85 |
| 1000 | 0.75 |
| 1250 | 0.66 |
| 1600 | 0.61 |
| 2000 | 0.62 |
| 2500 | 0.56 |
| 3150 | 0.56 |
| 4000 | 0.55 |
| NRC | 0.80 |



Absorption

Walls & Ceilings