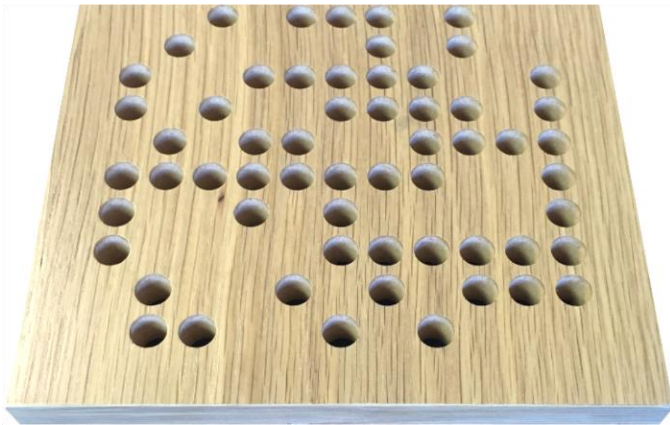


Expo™ Panel



PRODUCT OVERVIEW

The Expo™ panel system is the ultimate synergy between acoustical technology and architectural panel design. Utilizing an optimal binary pattern of perforations through a recycled, Class A fire rated, ULEF and FSC certified wood panel, the Expo™ achieves an excellent balance of sound absorption across the NRC frequency bands while preserving the ambiance of the space with high frequency diffusion.

SIZING

Standard Panel Dimensions: 8' length x 4' width
(alternate lengths and widths are available)
Thickness: 3/4"

LEED CREDITS

MRC4, MRC5, MRC7
EQc4.2, EQc4.4,
Schools EQp3, Schools EQc9

FIRE RATING

Class A per ASTM E-84

MADE IN



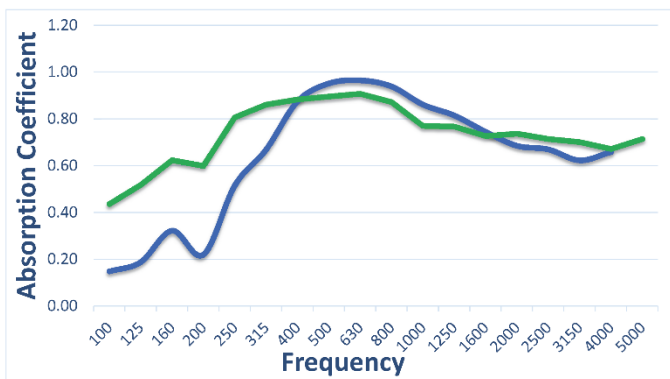
U. S. A.

FINISH

The Expo™ Panel system comes in a wide variety of finishes, including natural wood veneer, laminate and painted surfaces.

INSTALLATION

Mounting options include wall panel systems with a variety of cavity depths starting at 1-3/4" total system depth (acoustical data at left), as well as options for T-Bar compatibility.



Blue = Expo Panel + 1" 6pcf fiberglass board = NRC 0.75

Green = Expo Panel + 2" 6pcf fiberglass board = NRC 0.80

Frequency	w/ 2", 6lb/f ³ Fiberglass
100	0.44
125	0.52
160	0.62
200	0.60
250	0.81
315	0.86
400	0.88
500	0.90
630	0.91
800	0.87
1000	0.77
1250	0.77
1600	0.73
2000	0.74
2500	0.71
3150	0.70
4000	0.67
5000	0.71
NRC	0.80



Absorption

Walls & Ceilings