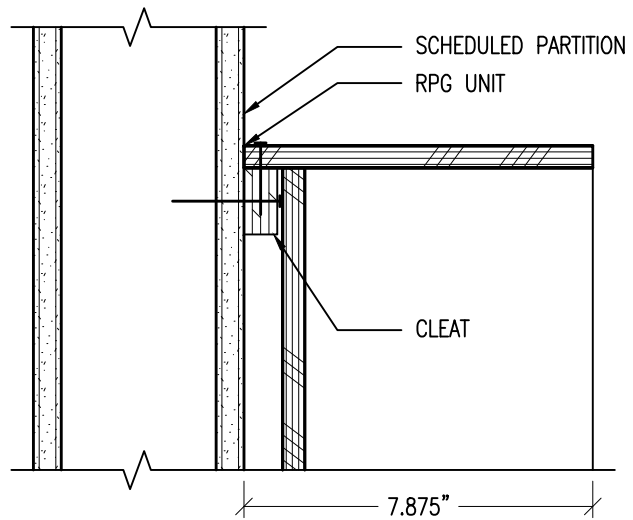


(1) 3/4" PLYWOOD CLEAT WILL BE PROVIDED FOR EACH UNIT

ADDITIONAL CLEATS MAY BE REQUIRED FOR UNITS OVER 48" TALL

CAULK EDGES TO PREVENT VIBRATION



99 SOUTH STREET, PASSAIC, NJ 07055
 (p) 973-916-1166 (e) estimating@rpgacoustic.com

Title: RPG MODFFUSOR (4X2)
 CLEAT MOUNTING

Proj: RPG PRODUCT

Date: 1/27/17

By: CNN

Scale: NTS

Comments:

Path: F:\Project Mgmt - RPG\RPG PRODUCTS_____Under reviewing___MODF_Modffusor\CAD_DWG\Modffusor Mounting