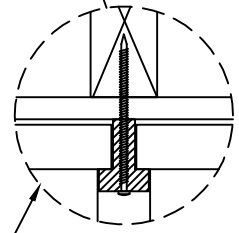
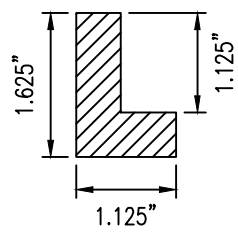


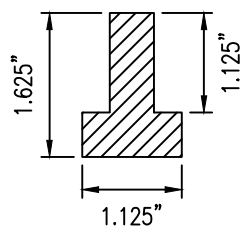
USE APPROPRIATE ANCHOR WHERE NECESSARY



SCREW INTO STUD/JOIST WHERE POSSIBLE.



'L' TRIM @ PERIMETER



'T' TRIM B/W UNITS

NOTE: SUGGESTED SURFACE MOUNT DETAIL.
ALL TRIM TO BE PROVIDED BY OTHERS.
GRID SPACING DETERMINED BY TRIM DETAIL.



99 SOUTH STREET, PASSAIC, NJ 07055
(p) 973-916-1166 (e) estimating@rpgacoustic.com

Title: RPG OMNIFFUSOR FRG
SURFACE MOUNTING

Proj: RPG PRODUCT

Date: 7/22/16

By: CNN

Scale: 1/2" = 1'-0"

Comments:

Path: C:\Users\RPG\Desktop\TO BE DELETED\WORKING\OMNI_Omniffusor FRG\CAD_DWG\Omniffusor FRG Mounting