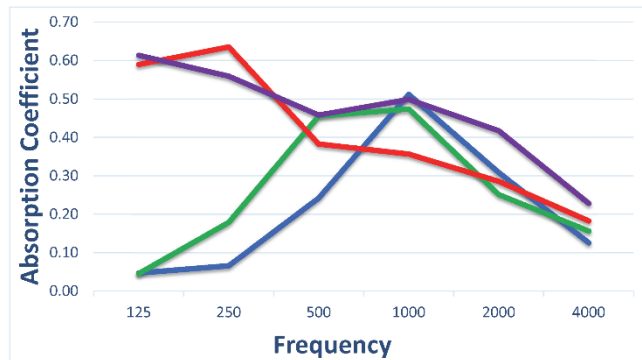
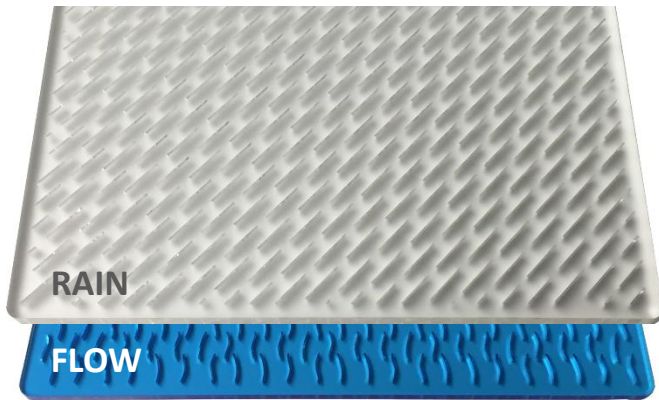


# Clearsorber™ Panel



The sound absorption chart above represents octave band data for a 3/16" thick Clearsorber® Panel in a reverberation chamber per ASTM-C423:

- Blue = Clearsorber™ Panel, 1 layer + 1.5" air space = NRC 0.30
- Green = Clearsorber™ Panel, 1 layer + 3" air space = NRC 0.35
- Red = Clearsorber™ Panel, 1 layer, E-mount = NRC 0.45
- Purple = Clearsorber™ Panel, 2 layers @ 1.5" spacing, E-mount = NRC 0.50

## PRODUCT OVERVIEW

The Clearsorber™ Panel is a patent pending micro-slotted, resin panel acoustical system that has been designed to absorb sound in the mid-range (speech) frequencies. It can be configured to achieve sound absorption in high and low frequency ranges as well. As a 100% fiber-free product, it can address high humidity and wet environments without the concern over air quality. The Clearsorber™ Panel brings together high transparency for clear viewing or natural day lighting with acoustical performance. Translucent options can provide privacy or enhance lighting effects, and second surface high definition digital printing can provide photo quality imagery.

## SIZING

Recommended Max Panel Dimensions: 16-20 square feet  
Panel Thickness: 3/16" optimum.

## LEED CREDITS

Schools EQp3, Schools EQc9  
EQc8.1, MRC7

## FIRE RATING

Not Fire Rated



## FINISH

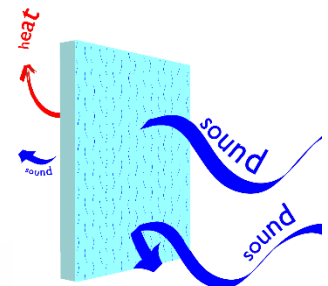
Clearsorber™ Panels are available in matte, high gloss and textured surfaces and from clear to translucent and opaque finishes. There are a variety of micro-slit patterns to choose from, custom patterns can be designed.

## INSTALLATION

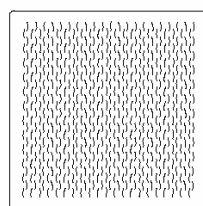
Clearsorber™ Panels are best mounted using standoffs, tensioned cable systems or integrated directly into an existing mullion. Several different options are available for each mounting type.

Frequency	Clearsorber Panel + 3" air cavity
100	0.10
125	0.03
160	0.00
200	0.10
250	0.20
315	0.24
400	0.34
500	0.45
630	0.58
800	0.53
1000	0.48
1250	0.41
1600	0.32
2000	0.23
2500	0.21
3150	0.19
4000	0.15
<b>NRC</b>	<b>0.35</b>

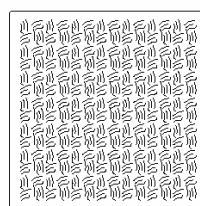
## How it works →



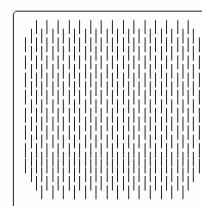
## Standard Patterns:



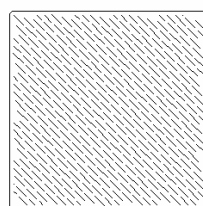
FLOW



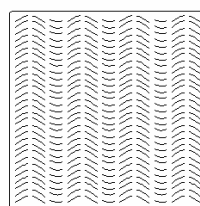
THISTLE



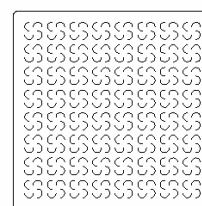
POUR



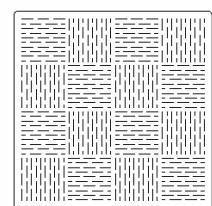
RAIN



WAVE



CLOVER



PARQUET