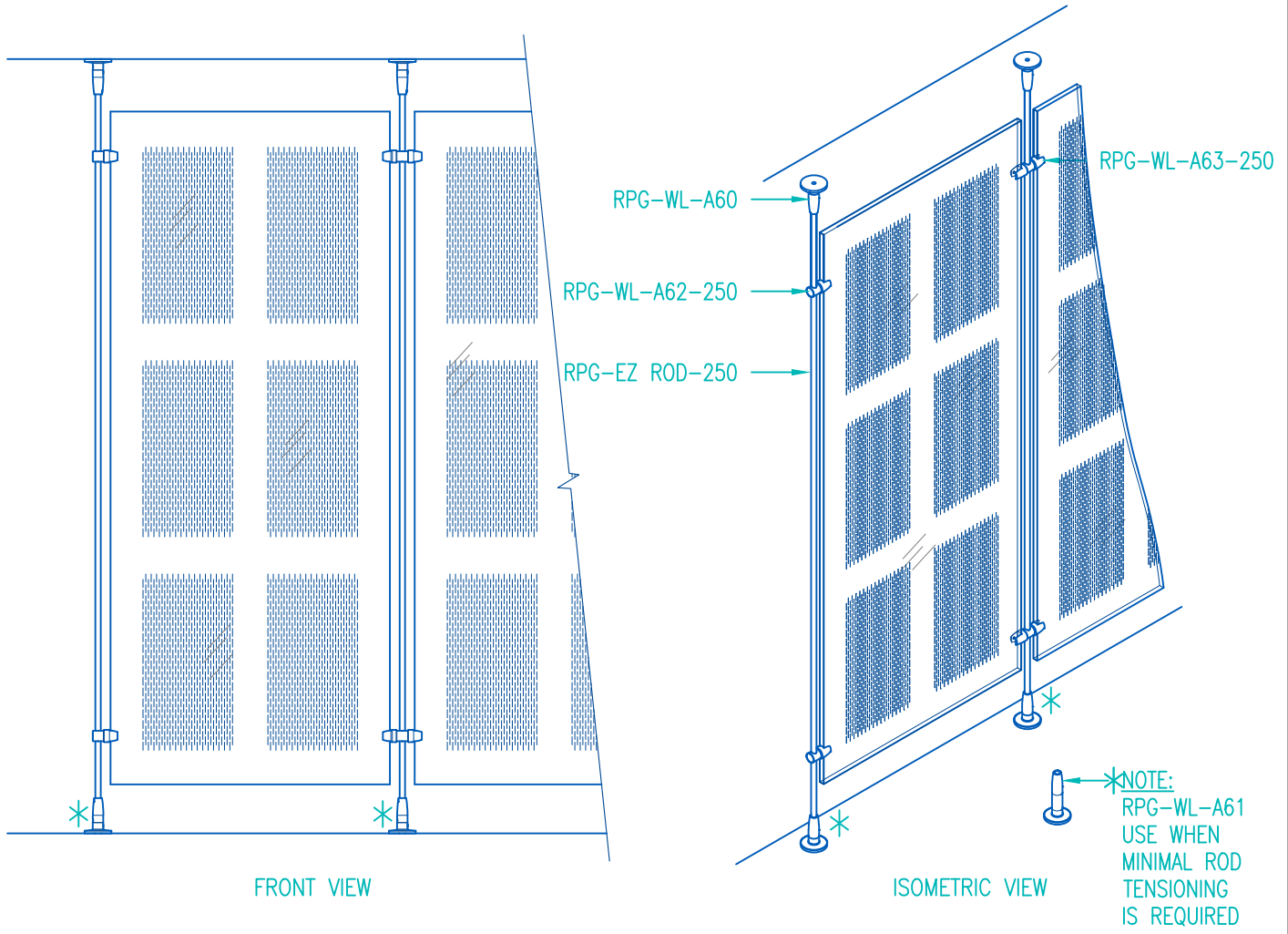


HORIZONTAL SURFACE MOUNTED-VERTICAL WIRE-LITE ROD SYSTEM

RPG PART NO.	PART DESCRIPTION	QUANTITY
RPG-WL-A60	UNIVERSAL 1/4" ROD MOUNT	4 MIN.
RPG-WL-A61	1/4" ROD TURNBUCKLE (USE WHEN TENSION IS REQUIRED)	2 MIN.
RPG-WL-A62-250	1/4" SINGLE CLIP WITH WIRE CONNECTOR	4 MIN.
RPG-WL-A63-250	1/4" DOUBLE CLIP WITH WIRE CONNECTOR	2 MIN.
RPG-EZ-ROD-250	1/4" DIA. ROD (8' OR 12" STOCK LENGTH)	VARIABLE ON SPAN LENGTH

NOTE:

1. 1/4" ALUMINUM ROD IS FLEXIBLE AND INTENDED FOR SHORT DISTANCES.
2. NUMBER OF PANEL GRIPPERS WILL VARY DEPENDING ON PANEL SIZE.
3. *USE RPG-WL-A61 WHEN MINIMAL ROD TENSIONING IS REQUIRED.



99 SOUTH STREET, PASSAIC, NJ 07055
(p) 973-916-1166 (e) estimating@rpgacoustic.com

Title: WIRE-LITE ROD SYSTEM I
1/4" DIA. ROD

Proj: CLEARSORBER PANEL

Date: 1/30/18 By: ZAH Scale: 1 1/2" = 1'-0"

Path:

Comments:
