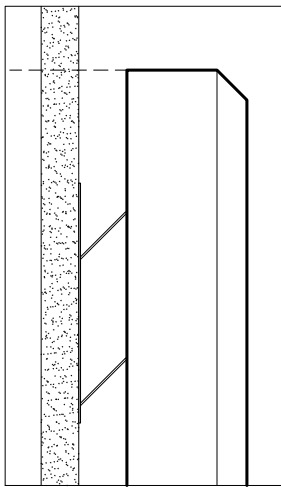
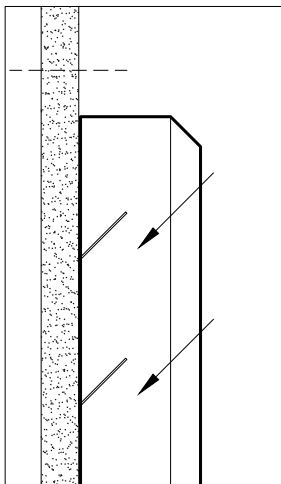


ATTACH IMPALING CLIPS TO WALL.

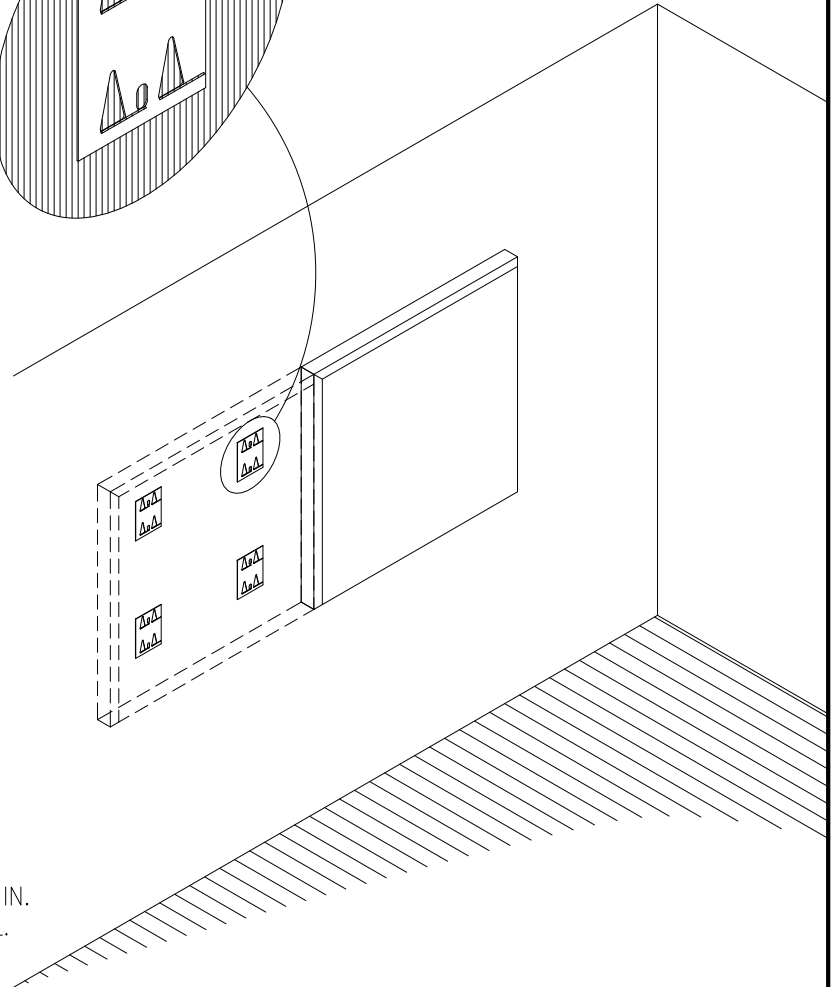
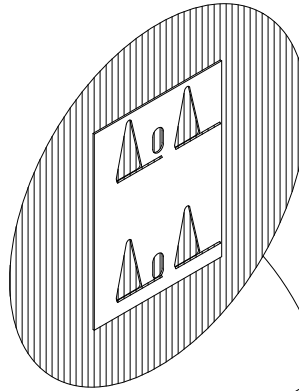
QTY./LENGTH				
	24"	48"	72"	96"
24"	4	4	6	8
48"	4	4	6	8
72"	6	6	-	-
96"	8	8	-	-



DRAW A LINE 1" ABOVE DESIRED HEIGHT.
GENTLY REST PANEL AGAINST CLIPS MAINTAINING LEVEL WITH LINE.



PUSH FIRMLY DOWN & IN.
PIERCE BACK OF PANEL.



99 SOUTH STREET, PASSAIC, NJ 07055
(p) 973-916-1166 (e) estimating@rpgacoustic.com

Title: RPG ABSORBOR PANEL MOUNTING
1- IMPALING CLIP

Proj: PROJECT

Date: 08/19/22

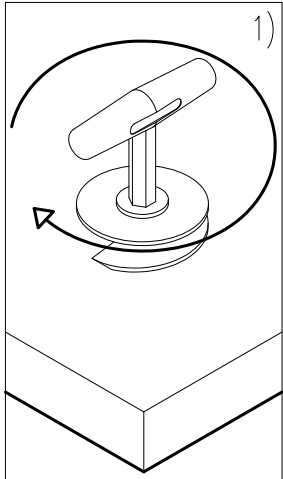
By: CNN

Scale: NTS

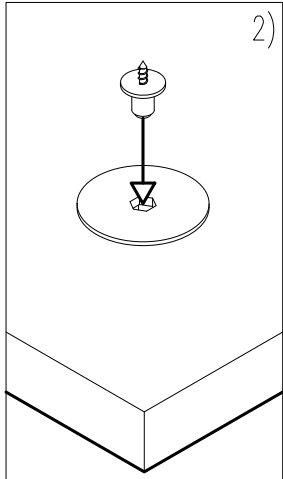
Comments:

Path: F:\Project Mgmt - RPG\RPG PRODUCTS\ALL PRODUCTS DRAWING\ABSP_Absorbor Panel\2- PDF Drawings\Mounting PDF

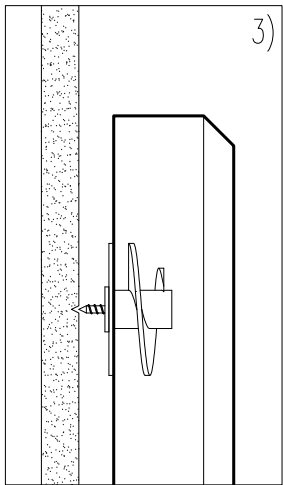
QTY./LENGTH				
	24"	48"	72"	96"
24"	4	4	6	8
48"	4	4	6	8
72"	6	6	-	-
96"	8	8	-	-



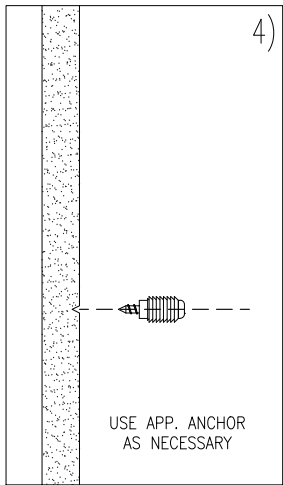
1) ATTACH ROTOFAST™ ANCHOR



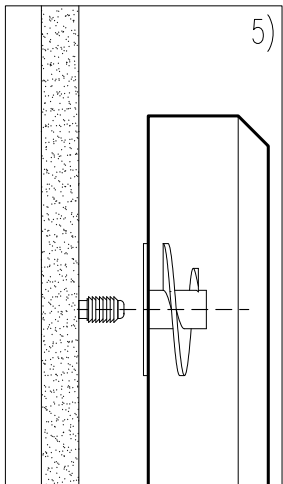
2) INSERT MARKER SCREW



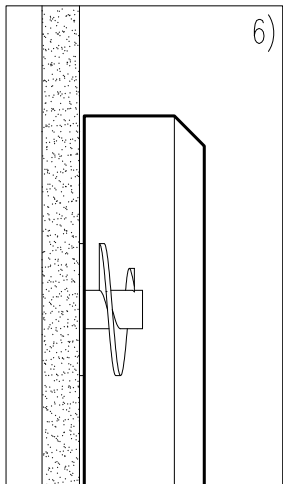
3) MARK WALL



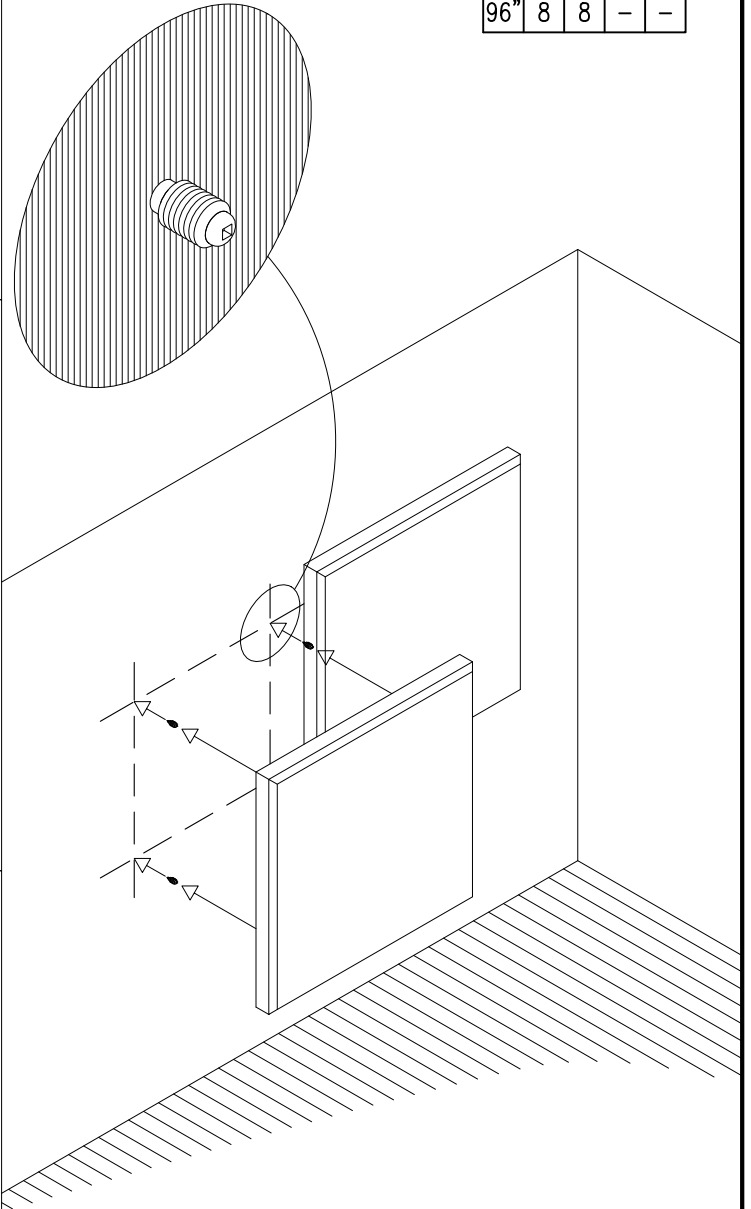
4) MOUNT STUDS
USE APP. ANCHOR AS NECESSARY



5) REMOVE MARKER SCREW



6) SNAP PANEL ONTO STUDS



99 SOUTH STREET, PASSAIC, NJ 07055
(p) 973-916-1166 (e) estimating@rpgacoustic.com

Title: RPG ABSORBOR PANEL MOUNTING
4 ROTOFAST SNAP - ON

Proj: PROJECT

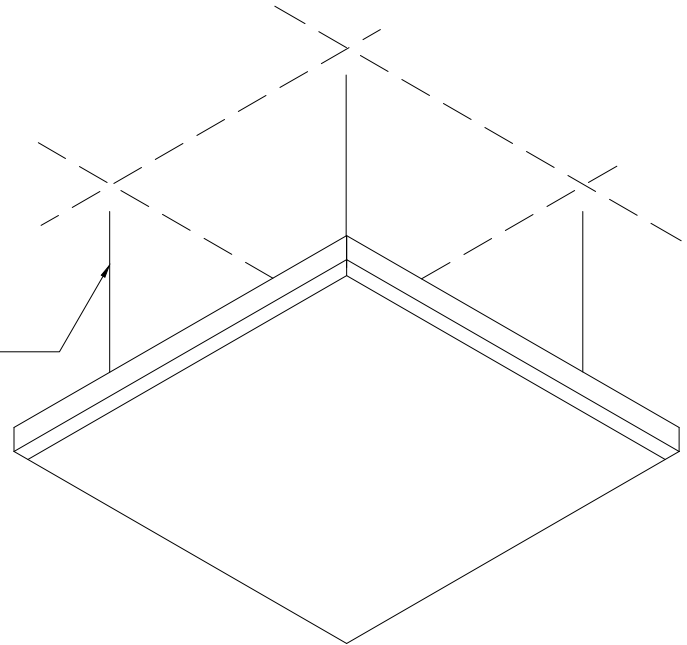
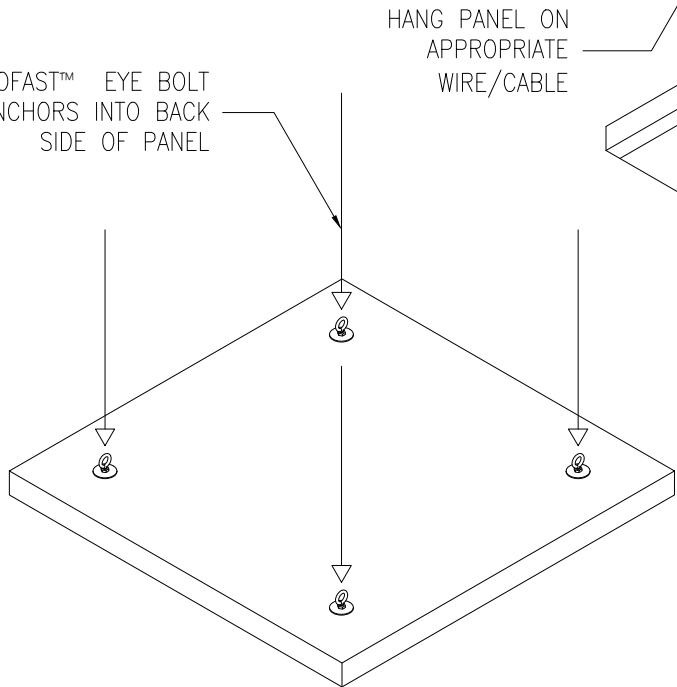
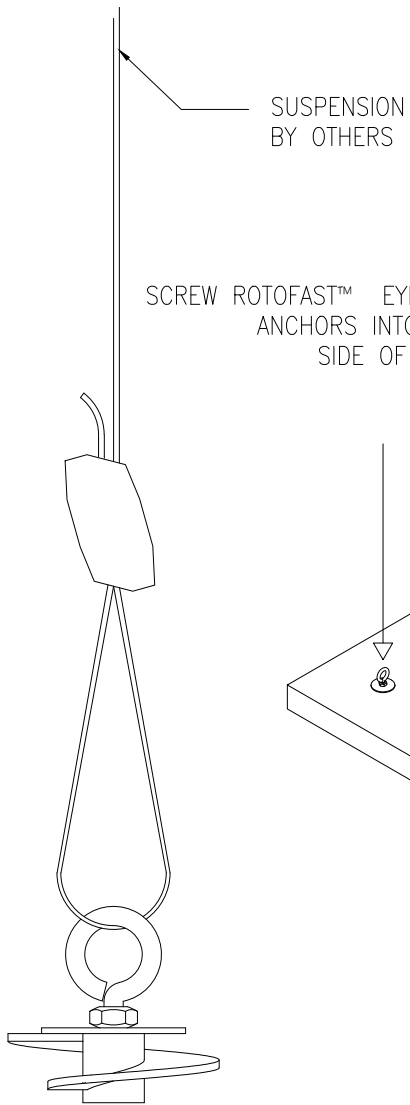
Date: 08/19/22

By: CNN

Scale: NTS

Comments:

Path: F:\Project Mgmt - RPG\PROJECTS\ALL PRODUCTS DRAWING\ABSP_Absorbor Panel\2- PDF Drawings\Mounting PDF



QTY./LENGTH				
	24"	48"	72"	96"
24"	4	4	6	8
48"	4	4	6	8
72"	6	6	-	-
96"	8	8	-	-



99 SOUTH STREET, PASSAIC, NJ 07055
 (p) 973-916-1166 (e) estimating@rpgacoustic.com

Title: RPG ABSORBOR PANEL MOUNTING #3
 ROTOFAST EYE LET

Proj: PROJECT

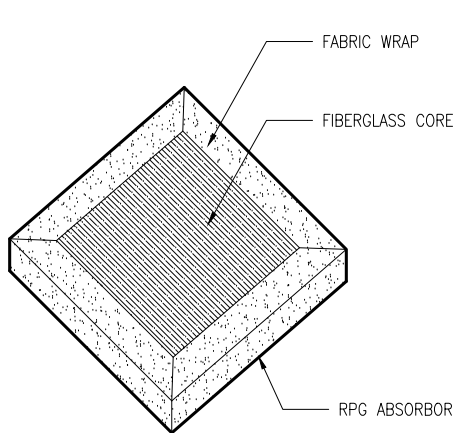
Date: 8/19/22

By: CNN

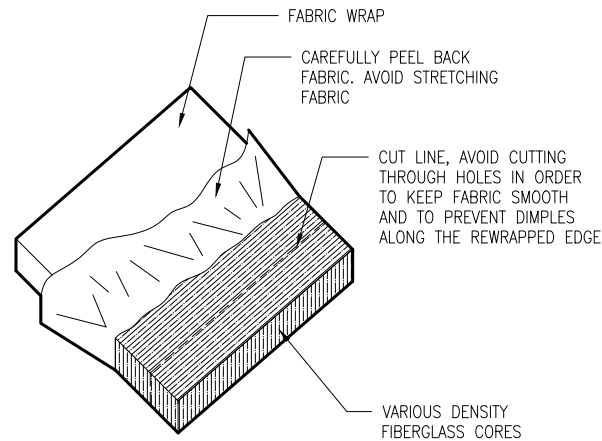
Scale: NTS

Comments:

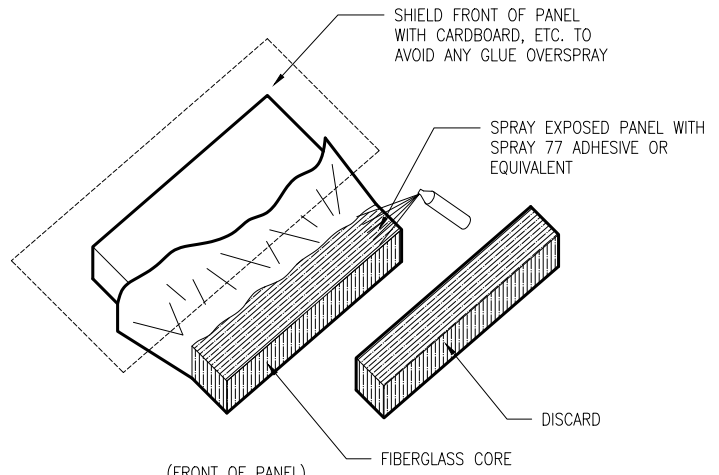
Path: F:\Project Mgmt - RPG__RPG PRODUCTS\ALL PRODUCTS DRAWING\ABSP_Absorbor Panel\2- PDF Drawings\Mounting PDF



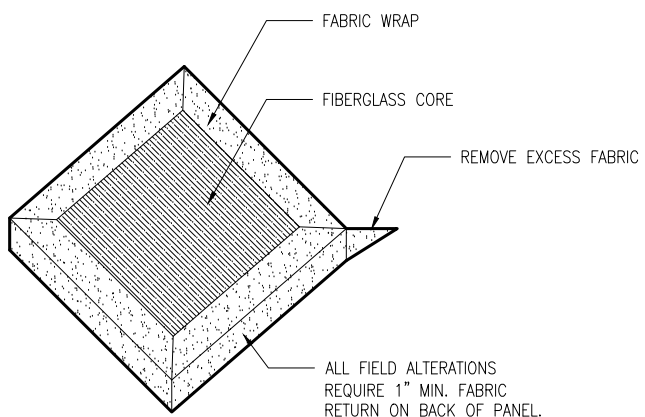
(BACK OF PANEL)
STEP 1



(FRONT OF PANEL)
STEP 2



(FRONT OF PANEL)
STEP 3



(BACK OF PANEL)
STEP 4

INSTRUCTIONS:

1. CAREFULLY PEEL FABRIC BACK PAST CUT LINE. USE HEAT GUN TO AID IN THE RELEASE OF ADHESIVE.
2. CUT PANELS AS NEEDED. USE RAZOR KNIFE TO CUT FIBERGLASS CORE. DO NOT CUT FABRIC.
3. COVER FRONT OF PANEL TO AVOID OVER SPRAY. SPRAY EXPOSED FIBERGLASS COREA WITH SUPER 77 ADHESIVE OR EQUIVALENT.
4. STRETCH FABRIC BACK ACROSS PANEL. PINCH EXCESS FABRIC TOGETHER WITH FINGERS AND CUT OFF FLAP WITH SCISSORS.



99 SOUTH STREET, PASSAIC, NJ 07055
(p) 973-916-1166 (e) estimating@rpgacoustic.com

Title: ABSORBOR PANEL FIELD TRIM
CUT AND RE - WRAP DETAIL

Proj: RPG PROJECT

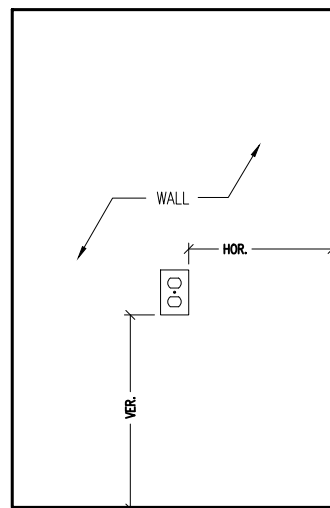
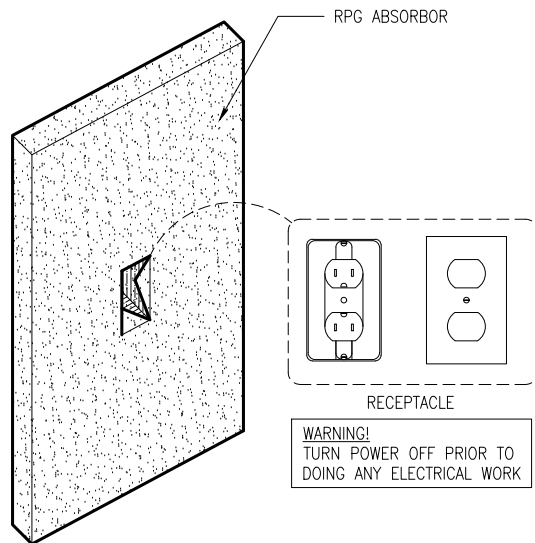
Date: 08/19/22

By: CNN

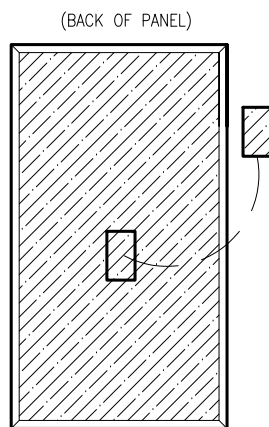
Scale: NTS

Comments:

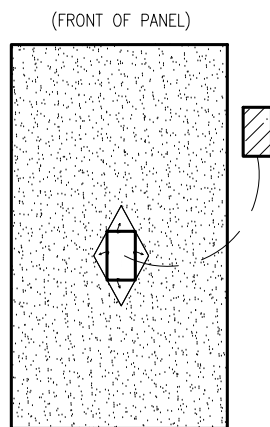
Path: F:\Project Mgmt - RPG\RPG PRODUCTS\ALL PRODUCTS DRAWING\ABSP_Absorbor Panel\2- PDF Drawings\Mounting PDF



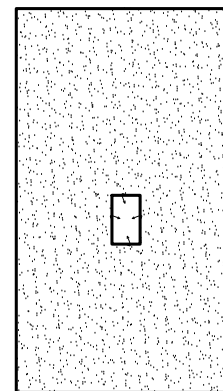
MEASURE LOCATION OF RECEPTACLE ON THE WALL AND TRANSFER DIMENSIONS TO THE BACK OF THE PANEL. ADD 1/16" TO ALL SIDES FOR ADDITIONAL CLEARANCE.



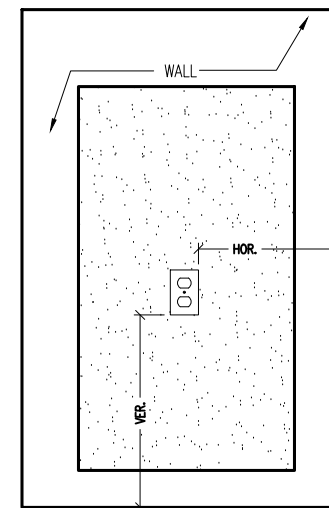
USING A RAZOR KNIFE, REMOVE THE FIBERGLASS FROM WITHIN THE OUTLINE FOR THE RECEPTACLE.



TRANSFER CUTOUT DIM. TO FRONT OF PANEL. CUT AN "X" IN FABRIC THEN PULL BACK THE FLAPS. USING A RAZOR KNIFE, CAREFULLY CUT OUT THE OPENING



SHIELD FRONT OF PANEL TO PREVENT ANY ADHESIVE OVER SPRAY, SPRAY FABRIC WITH SUPER 77 ADHESIVE OR EQUIVALENT. PULL FLAPS THROUGH OPENING AND ADHERE TO SIDES OF PANELS CUTOUT.



ATTACH MODIFIED PANEL TO WALL. PANEL SHOULD CLEAR RECEPTACLE EXTENSION. INSTANT A LARGER THAN ORIGINAL RECEPTACLE COVER AND RESTORE POWER.



99 SOUTH STREET, PASSAIC, NJ 07055

(p) 973-916-1166 (e) estimating@rpgacoustic.com

Title: ABSORBOR PANEL FIELD CUT OUT

Proj: RPG PROJECT

Date: 08/19/22

By: CNN

Scale: NTS

Comments:

Path: F:\Project Mgmt - RPG\PROJECTS\ALL PRODUCTS DRAWING\ABSP_Absorbor Panel\2- PDF Drawings\Mounting PDF