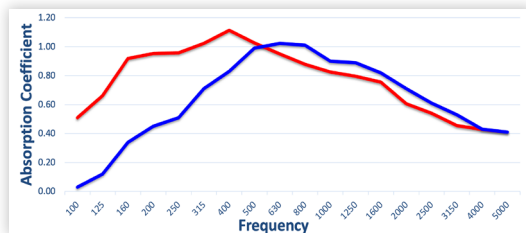


Perfecto® Micro Plank



Note: image indicates RPG standard T & G butt joint at long side of panels.



Blue = Expo Panel + 1", 6lb/ft3 fiberglass board - NRC = 0.80, SAA = 0.79

Red = Expo Panel + 2", 6lb/ft3 fiberglass board - NRC = 0.90, SAA = 0.87

Additional test data is available – please see the Supplementary Acoustical Data Charts online or contact your local RPG Sales Representative.

Frequency (Hz)	W/2", 6lb/ft3 Fiberglass Insul.
100	0.51
125	0.66
160	0.92
200	0.95
250	0.96
315	1.02
400	1.11
500	1.03
630	0.95
800	0.88
1000	0.83
1250	0.80
1600	0.76
2000	0.61
2500	0.54
3150	0.46
4000	0.43
5000	0.41
NRC	0.90
SAA	0.87

PRODUCT OVERVIEW

The **Perfecto® Micro Plank** is a simple but powerful union between architecture and acoustic performance. Utilizing tongue and groove (T & G) planks with hundreds of thousands of nominal 0.4mm **laser micro-perforations** available in a high recycled content, ULEF, Class A fire-rated and FSC certified MDF core with an optional black fleece backer, the **Perfecto® Micro Plank** can achieve up to an average **NRC=0.90** while maintaining the ambiance of the space with reflections at the highest frequencies.

SIZING

- Plank Options: 3"-12" W x up to 12' L x 3/4" T (Custom panel widths and lengths are available)
- Perforations: Nominal 0.4mm dia. holes on 2.0mm staggered centers
- Wood planks weigh approx. 1.50 lbs/ft²

CORE FIRE RATING

Class A (per ASTM E-84)

FINISH

The **Perfecto® Micro Plank** is available in various finishes, including natural and engineered wood veneers and laminates. RPG offers clear lacquer or factory color-matching of both wood finishes and paint colors.

INSTALLATION

Mounting options for the **Perfecto® Micro Plank** include wall systems (Z-clips, direct screw attached), either surface-mounted or with a variety cavity depths starting at 1-3/4" total system depth, or ceiling systems (RPG Turning Clip, direct screw attached) with options for 15/16" HD T-grid supplied by others.