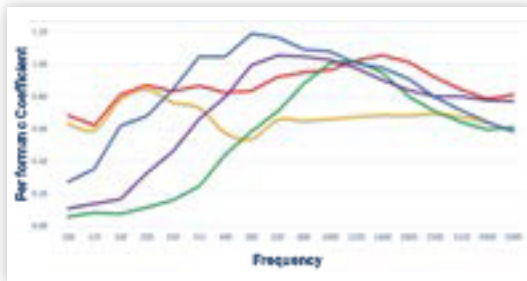


Perfecto® Mini Panel



The sound absorption chart above represents the average expected Perfecto® Mini Plank Absorptive Wood Panel or Plank acoustical performance. Several factors play into the exact performance, such as the cavity depth and contents of the cavity. Precise data for project requirements can be provided upon request.

Additional test data is available – please see the Supplementary Acoustical Data Charts online or contact your local RPG Sales Representative.

Frequency	Average Absorption Coefficient
100	0.11
125	0.14
160	0.17
200	0.33
250	0.46
315	0.66
400	0.80
500	1.00
630	1.06
800	1.05
1000	1.03
1250	0.90
1600	0.90
2000	0.84
2500	0.80
3125	0.80
4000	0.78
5000	0.77
NRC	1.00
SAA	0.99

PRODUCT OVERVIEW

The **Perfecto® Mini Panel** is a simple but powerful union between architecture and acoustic performance that provides a hole sizing option between the standard Perfecto® and the Perfecto® Micro perforations. Utilizing thousands of 1.0mm perforations and available in a high recycled content, ULEF, Class A fire-rated and FSC certified MDF core with an optional black fleece backer, the **Perfecto® Mini Panel** can achieve up to an average **NRC=1.00** while focusing the sound absorption spectrum in the mid and low frequencies while maintaining higher frequencies with a low open area.

SIZING

- Standard Panel: 4' W x 8' L x 3/4" T
- Maximum Panel: 5' W x 12' L x 3/4" T
(Custom panel widths and lengths are available)
- Perforations: 1.0mm dia. holes on 4.0mm staggered centers (Custom patterns and mixtures of perforation sizes are also available).
- Each panel weighs approx. 1.75 lbs/ft²

CORE FIRE RATING

Class A (per ASTM E-84)

FINISH

The **Perfecto® Mini Panel** is available in various finishes, including natural and engineered wood veneers and laminates. RPG offers clear lacquer or factory color-matching on both wood finishes and paint colors.

INSTALLATION

Mounting options for the **Perfecto® Mini Panel** include wall systems (Z-clips, direct screw attached), either surface-mounted or with a variety of cavity depths starting at 1-3/4" total system depth, and ceiling systems (Torsion Springs for downward access, RPG C-clips for lift and shift access, direct screw attached) with options for standard 15/16" HD T-grid supplied by others.