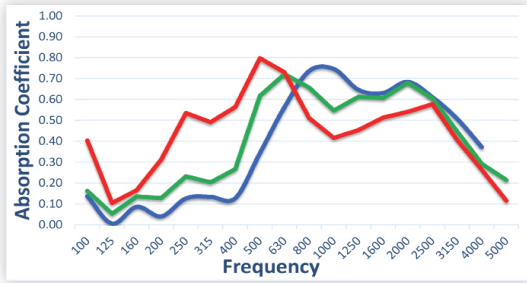
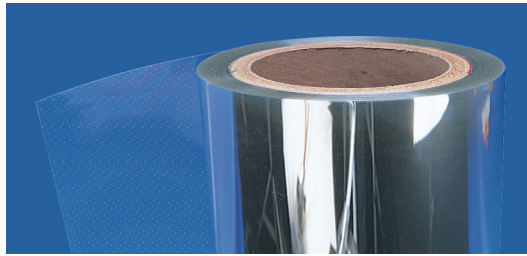


Clearsorbor® Foil-Dual Layer



Blue = Dual Layer Clearsorbor® Foil System, 1" airspace between layers, 1" airspace behind System to substrate - NRC=0.45, SAA=0.45
 Green = Dual Layer Clearsorbor® Foil System, 1" airspace between layers, 2" airspace behind System to substrate - NRC=0.50, SAA=0.49
 Red = Dual Layer Clearsorbor® Foil System, 1" airspace between layers, 4" airspace behind System to substrate - NRC=0.55, SAA=0.54

Additional test data is available – please see the Supplementary Acoustical Data Charts online or contact your local RPG Sales Representative.

Frequency	2 layer, 2" Airspace
100	0.16
125	0.05
160	0.14
200	0.13
250	0.23
315	0.20
400	0.27
500	0.62
630	0.72
800	0.66
1000	0.55
1250	0.61
1600	0.61
2000	0.68
2500	0.60
3150	0.45
4000	0.29
5000	0.19
NRC	0.50
SAA	0.49

PRODUCT OVERVIEW

Clearsorbor® Foil-Dual Layer is a Class A, high light-transmitting, micro-perforated acoustical system that targets sound absorption through the speech frequencies. With a light transmission index of approximately 85%, this high-impact and abrasion-resistant material resists yellowing and hazing and is resistant to most household cleaners and industrial chemicals. Because the system does not require the added use of conventional (opaque) sound-absorbent materials, it can provide clear, see-through visibility and natural daylighting while filtering out 60% of the UV rays. Considering its clear appearance, **Clearsorbor® Foil-Dual Layer** achieves impressive sound absorption that can be tailored to your project.

SIZING

- Maximum Foil Width: 48"
- Recommended length varies by application. Contact your local RPG Sale Representative for additional information.

FIRE RATING

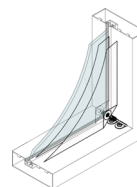
- Class A (per ASTM E-84)

FINISH

Clearsorbor® Foil-Dual Layer has a chemically resistant, UV-stable, glossy finish with 92% light transmission. Contact your local RPG Sales Representative for additional information.

INSTALLATION

Clearsorbor® Foil-Dual Layer is best mounted under tension for clean lines and maximum transparency. The simplest and most cost-effective tensioned mounting system utilizes stainless steel grommets at each corner of the Foil panel which is captured by a spring and finally stretched to an attachment point. A hem bar mounting is also available and is recommended when longer spans are required. The system can also be mounted as a lapendary style system for a draping effect.



Dual Layer System - Grommet Mounting



Dual Layer System - Hem Bar Mounting