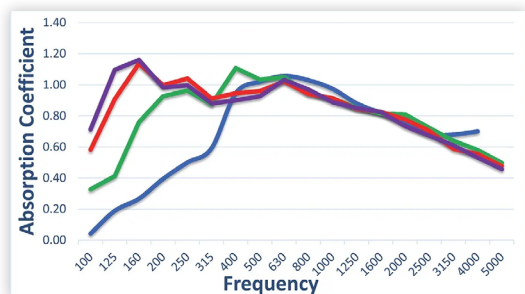
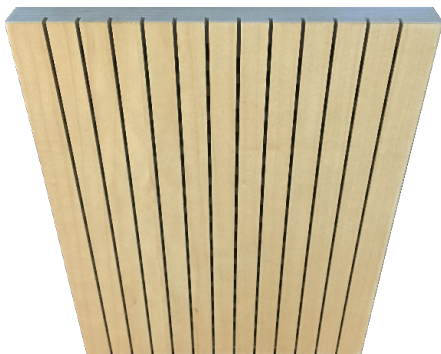


# Dado™ 14/2 Panel



Blue = 1" 6lb/ft<sup>3</sup> fiberglass board  
 Green = 2" 6lb/ft<sup>3</sup> fiberglass board  
 Red = 3" 6lb/ft<sup>3</sup> fiberglass board  
 Purple = 4" 6lb/ft<sup>3</sup> fiberglass board

Additional test data is available – please see the Supplementary Acoustical Data Charts online or contact your local RPG Sales Representative.

Frequency	W/4" 6lb/ft <sup>3</sup> Fiberglass Insul.
100	0.71
125	1.10
160	1.16
200	0.98
250	1.00
315	0.88
400	0.90
500	0.93
630	1.03
800	0.97
1000	0.89
1250	0.85
1600	0.82
2000	0.74
2500	0.67
3150	0.61
4000	0.53
5000	0.46
NRC	0.90
SAA	0.89

## PRODUCT OVERVIEW

The **Dado™ 14/2 Panel** is a powerful union between architecture and acoustic performance. Utilizing 2mm face-grooves and available in a high recycled content, ULEF, Class A fire-rated, and FSC-certified MDF core with an optional black acoustic backer, the **Dado™ 14/2 Panel** can achieve an average **NRC=0.90** while maintaining the space's ambiance with reflections at the highest frequencies.

## SIZING

- Standard Panel: 4' W x 8' L x 3/4" T
- Maximum Panel: 5' W x 12' L x 3/4" T (Custom panel widths and lengths are available)
- Grooves: 2mm wide with 14mm non-perforated bands between (grooves at 16mm OC)
- Planks with T & G long edges can be provided in lieu of panels. Plank widths, typically between 3"-12", to be finalized during the submittals process.
- Each panel weighs approx. 2.50 lbs/ft<sup>2</sup>

## CORE FIRE RATING

Class A (per ASTM E-84)

## FINISH

The **Dado™ 14/2 Panel** is available in natural and engineered wood veneers and laminates with clear lacquer or factory color-matching of wood finishes and paint colors. Standard species include Alder, Anigre, Ash, Birch, Cherry, Mahogany, Maple, Poplar, Red Oak, Walnut and White Oak. Custom species may be available on request.

## INSTALLATION

Mounting options for the **Dado™ 14/2 Panel** include wall systems (Z-clips, direct screw attached) either surface-mounted or with a variety of cavity depths starting at 1-3/4" total system depth, and ceilings systems with options (Torsion Springs for downward access, RPG C-clips for lift and shift access, direct screw attached) for standard 15/16" HD T-grid supplied by others.