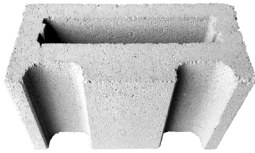
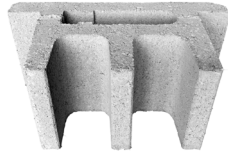


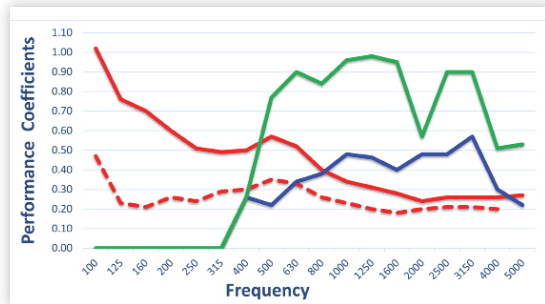
DiffusorBlox® - 8" Module



8" A Blox
(Non-slotted shown)



8" B Blox
(Non-slotted shown)



Blue = Diffusion Coefficient

Green = Scattering Coefficient

Red (Dashed) = Non-Slotted, Sealed Absorption Coefficient

Red (Solid) = Slotted, Sealed Absorption Coefficient

Additional test data is available – please see the Supplementary Acoustical Data Charts online or contact your local RPG Sales Representative.

Frequency (Hz)	Diffusion Coefficient
400	0.26
500	0.22
630	0.34
800	0.38
1000	0.48
1300	0.46
1600	0.40
2000	0.48
1500	0.48
3150	0.57
4000	0.30
5000	0.22

PRODUCT OVERVIEW

Flat reflective surfaces can cause interfering reflections and excessive reverberation in many spaces, corrupting work environments, meeting and gathering areas, sports arenas, natatoriums, music quality and speech intelligibility. RPG's **DiffusorBlox®** is an acoustical concrete masonry unit (CMU) that offers unprecedented economy by making it possible to incorporate complete acoustic performance into the structural walls of music, speech, athletic and multi-purpose facilities. **DiffusorBlox®** can also be configured to offer extended low-frequency absorption, sound isolation and sound-diffusive reflection control.

SIZING

- Standard CMU: 15-5/8" W x 7-5/8" L x 7-5/8" D
- Available in two profiles, A & B, and in slotted (S) and non-slotted (NS) configurations
- Each unit weighs approx. 40.00 lbs/CMU

FIRE RATING

Non-Combustible

FINISH

DiffusorBlox® can be finished in various ways to achieve different performance requirements. The Blox can be internally pigmented or painted with a special spray application to create an absorptive surface. When a diffusive surface is required, the Blox should be sealed and painted.

INSTALLATION

DiffusorBlox® are installed by the masonry trade. Contact RPG Sales Representative for information on installing the Blox to maintain the best absorptive/ diffusive acoustical values.

Note: Previously **DiffusorBlox®**