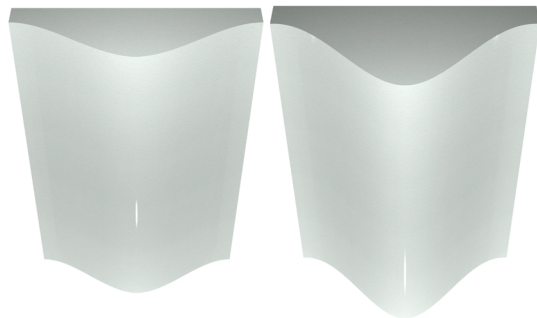
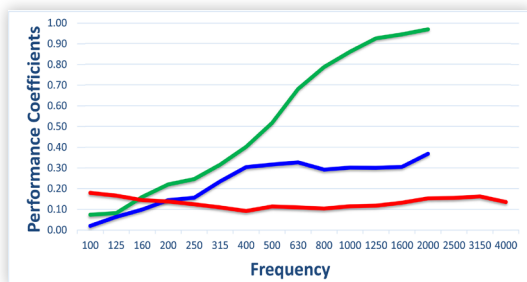


Waveform® Gaussian G



6" Depth (Finished) 12" Depth (Finished)



Blue = Diffusion Coefficient
Green = Scattering Coefficient
Red = Absorption Coefficient - NRC = 0.15, SAA - 0.12

Additional test data is available – please see the Supplementary Acoustical Data Charts online or contact your local RPG Sales Representative.

Frequency	Diffusion Coefficient
250	0.04
320	0.10
400	0.18
500	0.33
630	0.39
800	0.43
1000	0.43
1260	0.41
1600	0.48
2000	0.42

PRODUCT OVERVIEW

The **Waveform® Gaussian G Panel** was developed using RPG’s powerful shape optimization and aperiodic modulation technology which optimizes sound diffusion while providing a given shape motif. Made of glass fiber reinforced gypsum (GFRG), the panels have a bell-shaped appearance and are designed to increase intelligibility and enhance musical clarity and intimacy. A powerful one-dimensional sound diffuser, the symmetrical **Waveform® Gaussian G Panel** can be arrayed to reduce periodicity effects and be installed on walls or ceilings.

Note: RPG recommends using a mixture of 6" and 12" deep panels to achieve the acoustical information included in this data sheet. RPG can provide guidance regarding the mix of 6" and 12" panels.

SIZING

- Standard Panel: 4' W x 4' L x 6" or 12" D
- Material Thickness: 1/8" nominal GFRG
- Each panel weighs approx. 3.00 lbs/ft²

FIRE RATING

Non-Combustible

FINISH

The **Waveform® Gaussian G Panel** comes in a natural/ raw GFRG finish required to be painted on-site or factory color-matched to any paint color specification.

INSTALLATION

Overhead mounting of the **Waveform® Gaussian G Panel** is achieved by suspending units from integrated hairpin loops using RPG-supplied engineered cables and hardware. Each panel can be hung as a “cloud” or screwed together along the long edge to create a canopy. Units can also be mounted directly onto walls using RPG-provided integrated cleats.

Note: Previously Waveform Gaussian

