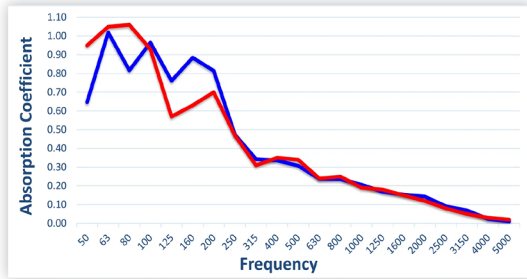


Modex™ Plate 2.0



A Mount - Standard
A Mount - Corner Load

Additional test data is available – please see the Supplementary Acoustical Data Charts online or contact your local RPG Sales Representative.

Frequency (Hz)	Corner Load Absorption Coefficients
50	0.95
63	1.05
80	1.06
100	0.93
125	0.57
160	0.63
200	0.70
250	0.47
315	0.31
400	0.35
500	0.34
630	0.24
800	0.25
1000	0.19
1250	0.18
1600	0.15
2000	0.12
2500	0.08
3150	0.05
4000	0.03
5000	0.02
NRC	0.30
SAA	0.29

PRODUCT OVERVIEW

The **Modex™ Plate 2.0** is absorptive primarily in the bass frequencies to balance modal distributions without affecting the mid and high frequencies. Housed within a sturdy, lightweight, perforated aluminum cabinet, a dampened plate mechanism offers bass control over several octaves.

STANDARD SIZING

- Standard Panel: 32-1/2" W x 48-1/2" L x 4-1/4" D
- Each panel weighs 50 lbs (approx. 5.00 lbs/ft²)

FIRE RATING

All Class A Components

FINISH

The **Modex™ Plate 2.0** comes in a standard utility-grade low-sheen black finish. They can also be wrapped with RPG-reviewed industry standard and custom fabrics for installations where appearance is a priority. Fabrics with acoustical performance data preferred.

INSTALLATION

The **Modex™ Plate 2.0** is manufactured for either horizontal or vertical installation and can be quickly and easily hung on any wall with the integrated Z-bracket. Panels can be surface-mounted to the ceiling with additional blocking.

Previously: Modex™ Plate

