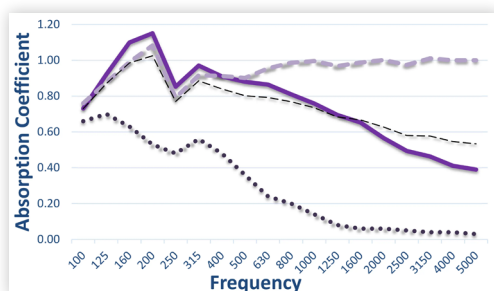
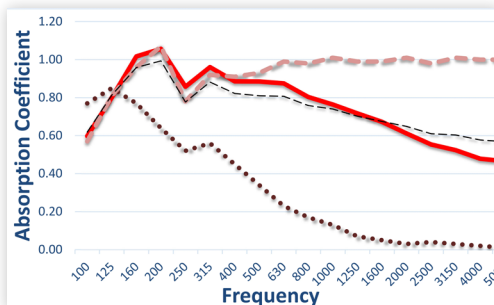
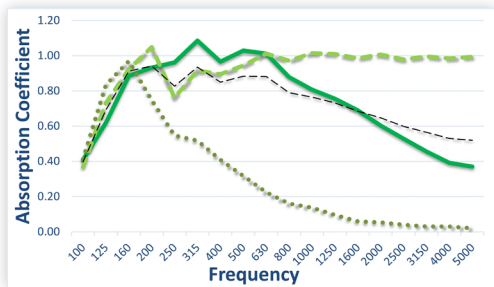
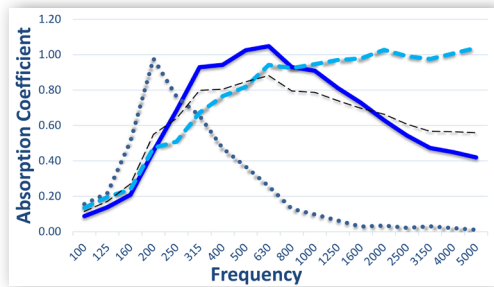


Peak Performance 2.0



COMPREHENSIVE

WALLS & CEILINGS



PRODUCT OVERVIEW

RPG's **Peak Performance 2.0** fabric panel system delivers all the key elements of a balanced acoustical design: absorption, diffusion and low frequency control in a simple, economical 3-panel approach.

Apply a 3:2:1 ratio to achieve the collective results posted in the datasheet:

- (3) BAD Panel 2.0, Hybrid Absorptive/Diffusive
- (2) Broadorb 2.0, Dedicated Absorption
- (1) Modsorb 2.0, Low Frequency Control

At all thickness options, the three different panels are the same thickness for perfect alignment in the field. The core configurations are different; however, once they are wrapped in fabric, you will never know that there is more going on acoustically than meets the eye.

BAD Panel 2.0: <https://www.rpgacoustic.com/product/badtm-panel-2-0/>

Modsorb 2.0: <https://www.rpgacoustic.com/product/modsorbortm-2-0/>

Broadorb 2.0: <https://www.rpgacoustic.com/product/broadorbortm-2-0/>

SIZING

- Maximum Panel: 4' W x 10' L
(Custom panel widths and lengths are available)
- Panel Thickness Options: 1-3/8", 2-3/8", 3-3/8" and 4-3/8"

FIRE RATING

All Class A Components (per ASTM E-84)

FINISH

All **Peak Performance 2.0** fabric panels can be wrapped with the same fabric; choose from a selection of industry-standard or custom offerings. Send RPG your fabric selection for evaluation if you would like to confirm it will be suitable.

INSTALLATION

The **Peak Performance 2.0** fabric panel series can be quickly and easily hung on any wall surface using RPG's Impalit™ clip. For ceiling applications, the panels can be either direct mounted with Z-bar attachments or suspended using a cloud anchor kit. Panels can also be configured to be installed in standard 15/16" HD T-grid supplied by others.

