

Blue = Dual Layer Clearsorber® Foil System, 1" airspace between layers, 1" airspace behind System to substrate - NRC=0.45, SAA=0.45

Green = Dual Layer Clearsorber® Foil System, 1" airspace between layers, 2" airspace behind System to substrate - NRC=0.50, SAA=0.49

Red = Dual Layer Clearsorber® Foil System, 1" airspace between layers, 4" airspace behind System to substrate - NRC=0.55, SAA=0.54

Additional test data is available – please see the Supplementary Acoustical Data Charts online or contact your local RPG Sales

Frequency	Dual layer, 4" Air Cavity
100	0.40
125	0.11
160	0.17
200	0.31
250	0.54
315	0.49
400	0.56
500	0.80
630	0.73
800	0.51
1000	0.42
1250	0.45
1600	0.51
2000	0.54
2500	0.58
3150	0.41
4000	0.26
5000	0.12
NRC	0.55
SAA	0.54

PRODUCT OVERVIEW

Clearsorber® GO is a Class A, high light-transmitting, micro-perforated acoustical system with an operable battery-powered housing mechanism that targets sound absorption through the speech frequencies. With a light transmission index of 92 for a single layer, this high-impact and abrasion-resistant material resists yellowing and hazing and is resistant to most household cleaners and industrial chemicals. Because the system does not require the added use of conventional (opaque) sound-absorbent materials, it can provide clear see-through visibility and natural daylighting while filtering out 60% of the UV rays. Considering its clear appearance, **Clearsorber® GO** achieves impressive sound absorption that can be tailored to your project. Available in Dual Layer (DL) or Single Layer (SL).

SIZING

- Maximum Foil Width: 48"
- Recommended length varies by application. Contact your local RPG Sales Representative for additional information.

CORE FIRE RATING

Class A (per ASTM E-84)

FINISH

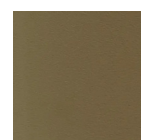
Clearsorber® GO has a chemically resistant, UV-stable, glossy finish with 84% light transmission - Dual Layer. Contact your local RPG Sale Representative for additional information.

INSTALLATION

Clearsorber® GO operable housing is typically head-mounted above the window/opening, either exposed or recessed - refer to manufacturer's instructions.

STANDARD HOUSING

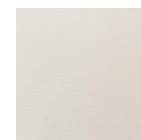
FINISHES (fascia, head-boxes, and side/sill channels)



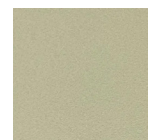
Sand



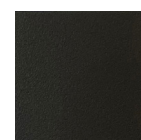
Anodized



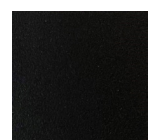
White



Ivory



Bronze



Black